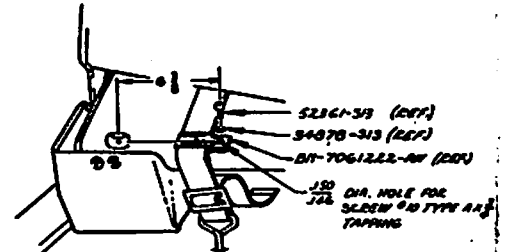
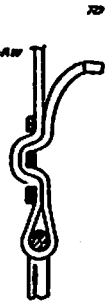


FIGURE-1



VIEW-AA  
POWER SEAT



VIEW-BB

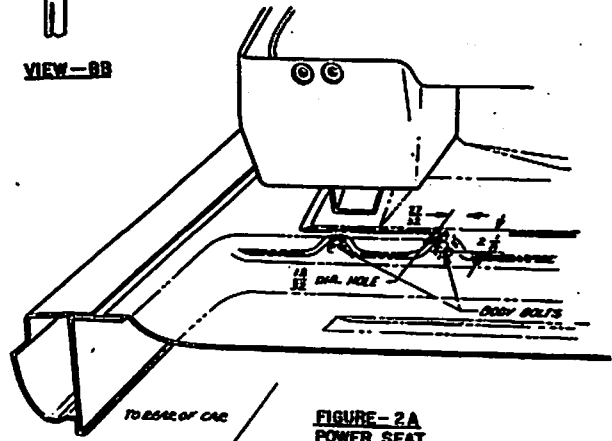


FIGURE-2A  
POWER SEAT

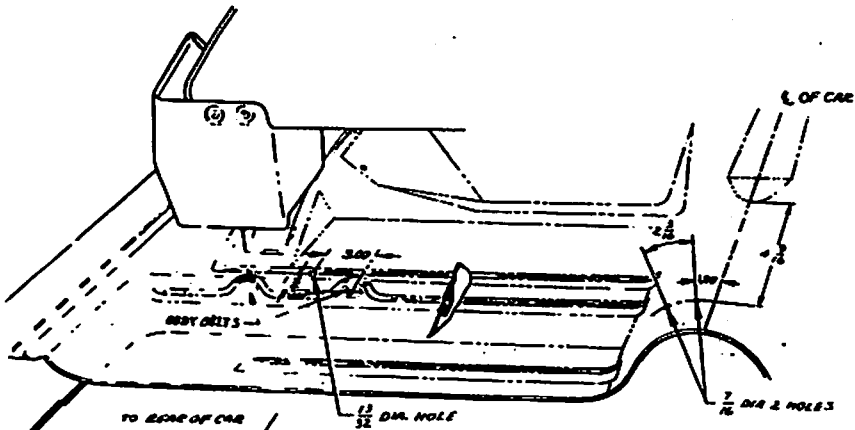


FIGURE-2

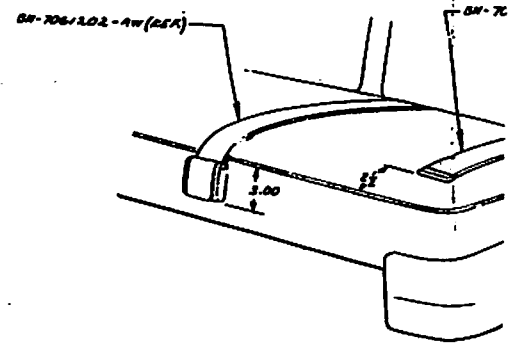


FIGURE-4

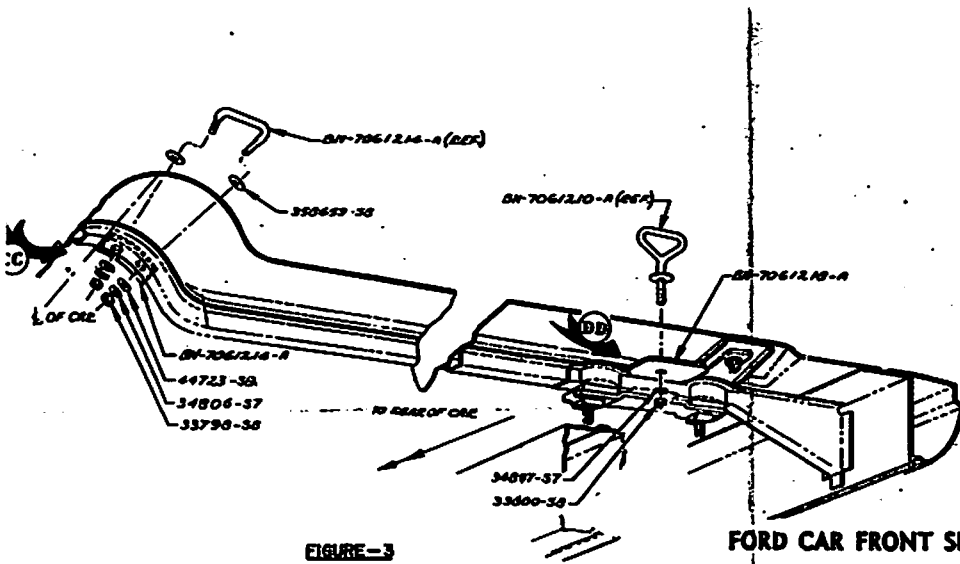
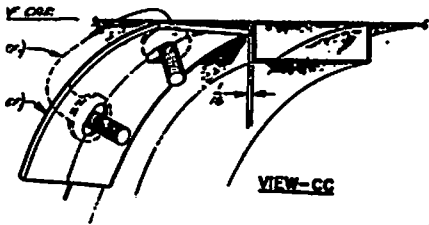


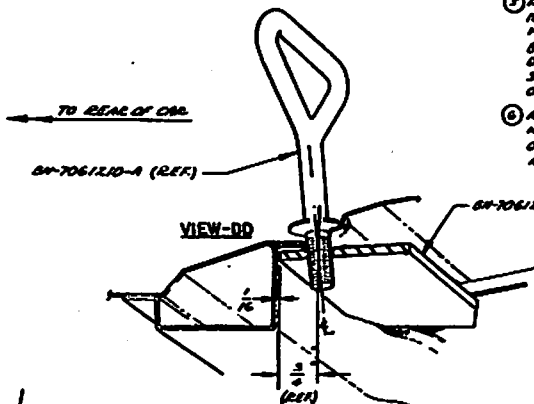
FIGURE-3

### FORD CAR FRONT SEAT BELT INSTALLATION INSTRUCTIONS 1952 THRU 1956 MODELS

- 1 POSITION FRONT SEAT IN REARWARD POSITION.
- 2 FOLD REAR FLOOR MAT BACK IN AS SHOWN POSITION.
- 3 DETERMINE LOCATION OF INNER AND OUTER ANCHOR BOLT HOLES THROUGH FLOOR MAT OR CARPET AND CUT EXACT SLIT AND HOLES IN MAT, SEE FIGURE-1.
- 4 INSTALL INNER AND OUTER ANCHOR BOLTS (SEE FIGURE-3). THE WELDED FLAT WASHERS ON OUTER ANCHOR BOLT AND SPECIAL FLAT WASHER (1.00 OUTSIDE DIAMETER) FOR INNER ANCHOR BOLT MUST BE ASSEMBLED ON TOP SURFACE OF FLOOR MAT UNDER FLOOR MAT.
- 5 CORRECT BELT ASSEMBLIES TO INNER AND OUTER ANCHOR BOLTS AS SHOWN IN FIGURE-1. ENDS OF BELT ASSEMBLIES SHOULD BE POSITIONED TO OBTAIN THE DIMENSIONS SHOWN IN FIGURE-6 FOR CORRECT USE. WHEN BELT IS BEING WORN, BELT SHOULD STAY CENTER TOWARD OUTBOARD SIDE. BELT SHOULD NOT REST ON HIP BONE OF PASSENGER. OUTBOARD BELT LEADERS SHOULD BE KEPT AS SHOWN AS BELT IS POSITIONED FROM THE REAR OF CAR.
- 6 IF THE DIMENSIONS SHOWN IN FIGURE-6 ARE NOT OBTAINED, THE BELT SHOULD BE ADJUSTED TO OBTAIN THE 1.00 CLEARANCE DIMENSION SHOWN IN VIEWS CC AND DD. DO NOT SHIRT OR SLIP THE TUNNEL IN SIDE OR OUTSIDE OF BODY.
- 7 AFTER ESTABLISHING CORRECT HOLE LOCATIONS, DRILL HOLES IN FLOOR MAT TO EXACTIVE INNER AND OUTER ANCHOR BOLTS. (SEE FIGURE 4 FOR CORRECT DRILL AND REAMER DIMENSIONS FOR TUNNEL.)



VIEW-CC



VIEW-DD

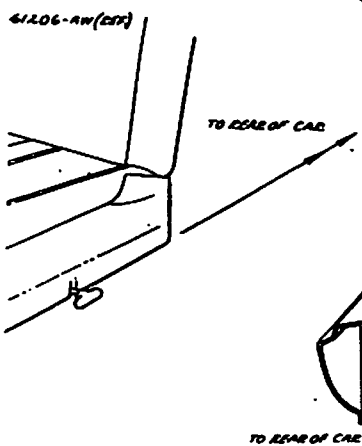


FIGURE-5 1952-1954 MODELS

BOLT ACCESS HOLES

TO REAR OF CAR

1.00 HOLES

1952-1954 MODELS  
INSTALLATION SAME AS ABOVE EXCEPT:  
USE LOCATIONS DIMENSIONS SHOWN IN FIGURE-5 FOR INSTALLATION OF SEAT BELTS IN 1952 TO 1954 CARS.  
INNER CENTER ANCHOR BOLT LEADERS SHOULD BE KEPT AS SHOWN IN VIEW DD TO FIT THE LARGER LEADS AT TUNNEL AREA.  
REAR BR-706/214-A TO DIMENSIONS SHOWN

VIEW-EE  
1952-1954 MODELS