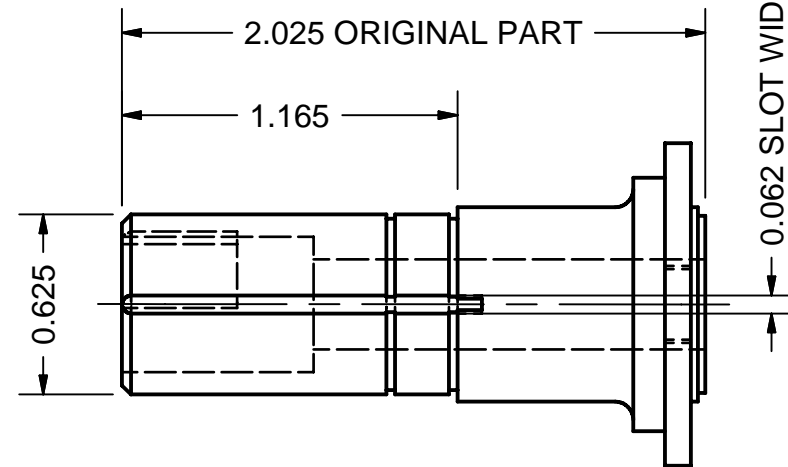
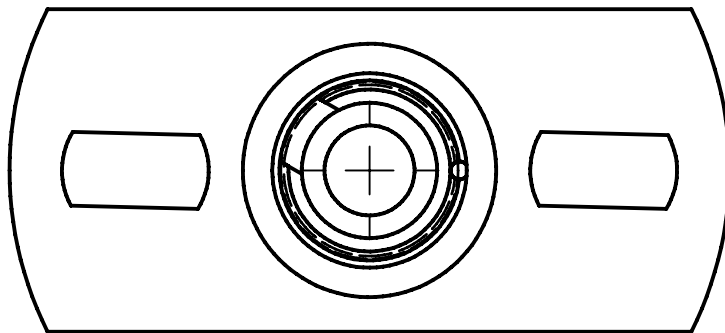
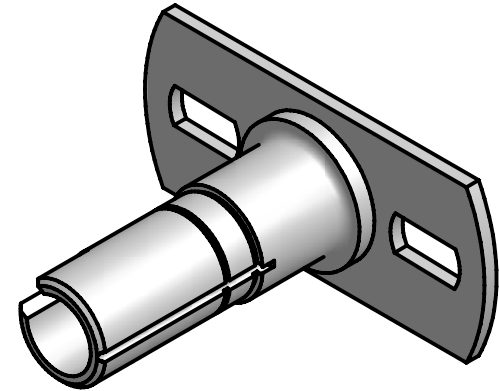


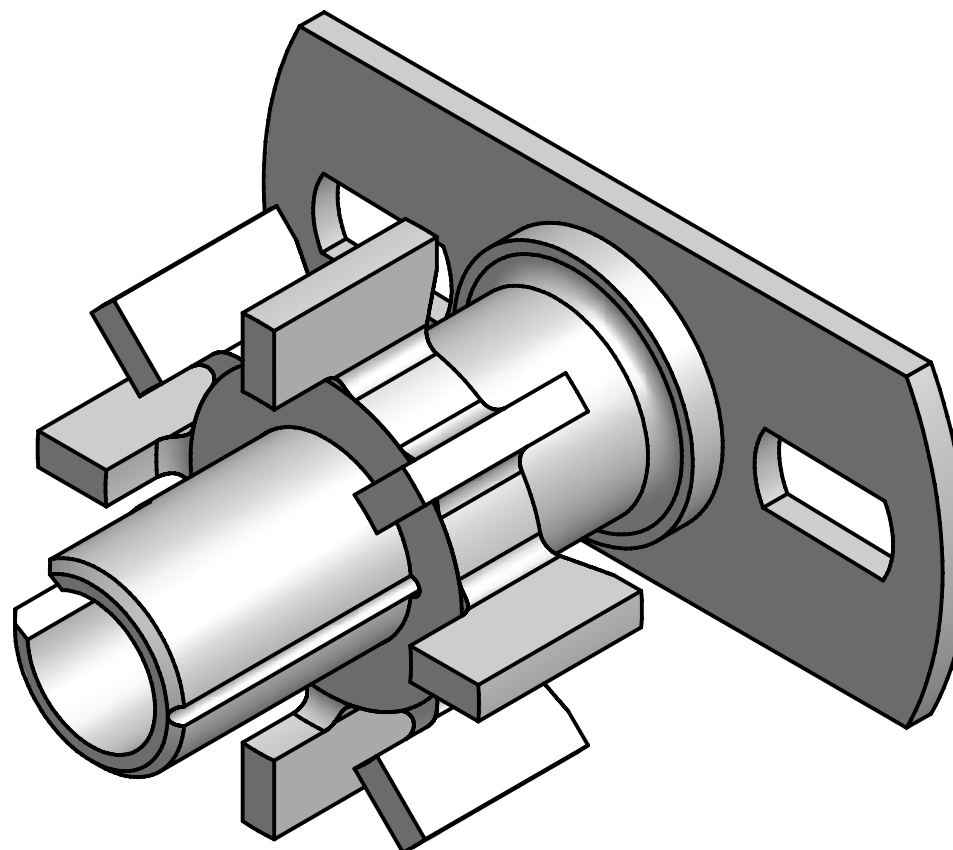
DISTRIBUTOR ROTOR SHAFT MODIFICATION FOR USE WITH FORD ELECTRONIC IGNITION

ALLOWS THE USE OF A 70'S "RELUCTOR" WHEEL
IN A COMMON Y-BLOCK DISTRIBUTOR. THIS IS NOT
THE LOAD-O-MATIC OR LATER REPLACEMENT VERSION

THE POINT CAM IS REMOVED AND THE UPPER SHAFT
DIAMETER (.625) IS EXTENDED DOWN TOWARD THE
BASE PLATE.

MUST BE GROOVED AS SHOWN TO ALLOW LOCKING
THE RELUCTOR ROTATION WITH A SHORT 1/16 ROLL PIN.
ALIGNED AS SHOWN IT APPROXIMATES THE POSITION
OF THE RELUCTOR RELATIVE TO THE ROTOR ON THE
LATER MODEL SHAFT.





DISTRIBUTOR ROTOR SHAFT

SHOWN WITH RELUCTOR WHEEL INSTALLED FOR TEST FIT PURPOSES. RELUCTOR IS INDEXED TO ALIGN ROLL PIN WITH SLOT. FACTORY RELUCTORS HAVE TWO SLOTS AT 180°.

DO NOT INSTALL RELUCTOR AND ROLL PIN UNTIL UNIT IS FITTED INTO DISTRIBUTOR AND DETECTOR COIL / BASE PLATE IS IN PLACE.